

THE FRIENDS OF SWANAGE HOSPITAL

**— provide a partnership between
our Community and the Hospital**

We help patients and staff in many ways

We supply the most up-to-date medical equipment for:

*Operating Theatre
X-Ray Department
Physiotherapy Unit
Out patients Department*

In recent years we have spent £400,000 helping
to improve every department in the Hospital

Our wards have Radio and Telephone links

We have modernised Bathrooms

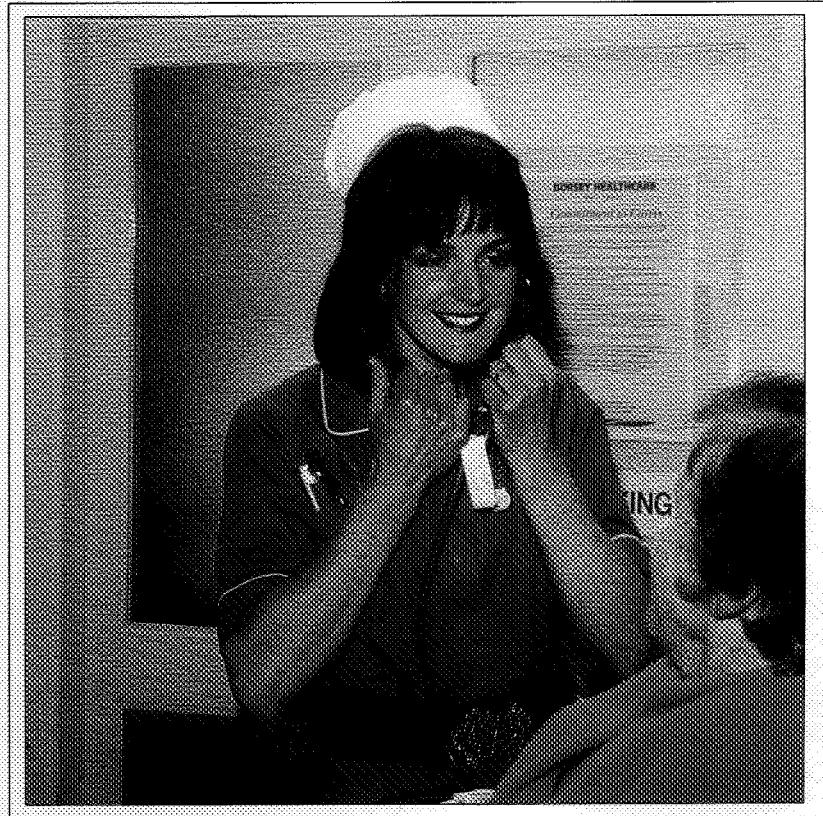
Not least, we provide a bus to take patients
to and fro between their homes and the Day Hospital

Please join the Friends and support your Hospital



DORSET HEALTHCARE

NHS TRUST



SWANAGE HOSPITAL

QUEENS ROAD, SWANAGE, DORSET, BH19 2ES

TEL: (01929) 422282 FAX: (01929) 423872

SWANAGE HOSPITAL

Throughout the 99 years since its founding, Swanage Hospital has played a central role in the community life of the people of Swanage and the Purbecks.

Although we have seen many changes, during that time, in the way in which health care is provided for the population, the needs of the individual have not changed greatly; when we are sick, or in pain, physically or mentally, we need care and support which is not only skilled but also kindly and respectful, and as near to our home and loved ones as possible.

With recent rapid development of new techniques in medicine, there has been a tendency to centralise services into large hospitals. But, for the many patients who do not need such specialised care, the local community hospital, where they can be cared for by their own family doctor, is the preferred alternative.

However, such a local hospital must keep up with the times, by developing new skills and new services. Swanage Hospital has done this, and will continue to strive to maintain the position of esteem and affection in which it is held by the people of Swanage.

You will read in this booklet of the wide range of services now provided for local people. Dorset HealthCare NHS Trust, of which Swanage Hospital has been a part since April 1992, is committed to improving these services so that they become even more responsive to the needs of Purbeck. This is a task we cannot achieve alone. In addition to the work of our skilled and valued staff, we have over the years, as you will read, had wonderful practical support from our very active League of Friends, and we sincerely hope we can continue to rely on them in the future. We have also been most fortunate in the active co-operation of our general practitioners, whose help is invaluable.

On behalf of the Board of Dorset HealthCare NHS Trust, may I say "thank you" to the people of Swanage for your continuing interest and involvement in "your hospital" - may it flourish in striving to provide the services and care you need.

DR. OLWYN OCKELFORD, Chairman, Dorset Healthcare NHS Trust

SWANAGE HOSPITAL



SWANAGE HOSPITAL is a Community Hospital with 23 beds. It provides a wide variety of services to the local Community, including:-

- 24 hour minor Casualty, Surgical and Medical care
- Occupational Therapy
- Physiotherapy
- Day Hospital
- Respite Care
- X-ray department
- Outpatient department

Care is also provided for many summer tourists who visit the area each year, and services are being extended to other parts of Dorset.

The staff provide high quality care in a friendly and homely environment. The aim of all staff is to offer skilled and personal care, based on the assessed individual needs of each patient.

The Hospital Reception is situated in the main Entrance Hall, where you will be welcomed when reporting for admission or treatment.

General enquiries are also dealt with here and telephone calls are received for the whole hospital.

HISTORY OF SWANAGE HOSPITAL

Swanage Cottage Hospital was built in 1895 to supply medical care for those described as 'small rate payers'. The idea of such a hospital in the town was said to have come from Elizabeth Burt, wife of George Burt who had himself done much to bring the essential services of water, gas and drainage to the town. After the death of their parents the four surviving children set about making Elizabeth's wish reality, and built the hospital as a fitting memorial to them.

Being a relatively small hospital planned on human scale with a 'picturesque' facade, from the first the building provided the homely atmosphere it has managed to retain through its many subsequent additions and alterations.

From the outset, the people of Swanage were involved with the life of the hospital by the giving of their time, by fundraising, and by gifts in kind. Over the years, this involvement has continually increased and public reaction, locally to all things actual or potential affecting the future of the hospital, demonstrates the extent to which it is felt to be "our hospital".

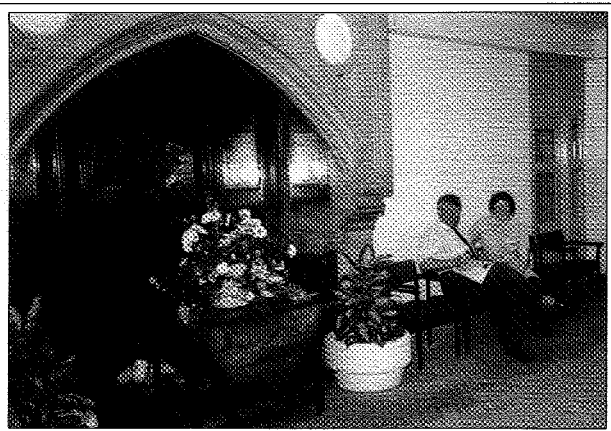
In 1948, in company with most other hospitals in the country, Swanage Hospital became part of the National Health Service. A local branch of the League of Friends was formed to provide "comforts and amenities for patients and staff".

In the early 1970's, this emphasis changed and there commenced the close cooperation between the League of Friends and the Regional Health Authority with regard to the extension and upgrading of the building which continues today.

This co-operation is made possible by the phenomenal generosity of local people to the funds of the League of Friends, in the form of donations and legacies.

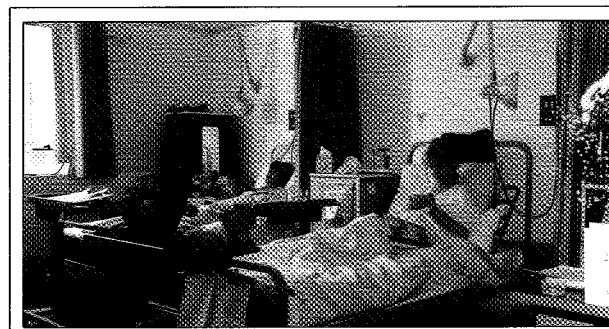
We feel we may look on the past with pride and to the future with confidence.

Margaret Emms



WARDS

Four wards and one single room are available to provide care in a warm, calm, friendly environment. Treatment for many medical conditions, respite care and compassionate care for the terminally ill, can all be provided. There is a facility for a relative to stay overnight if needed.



Pre and post operative information is available and patient's relatives and carers are included in discharge planning.

Medical care is provided by the local GP's

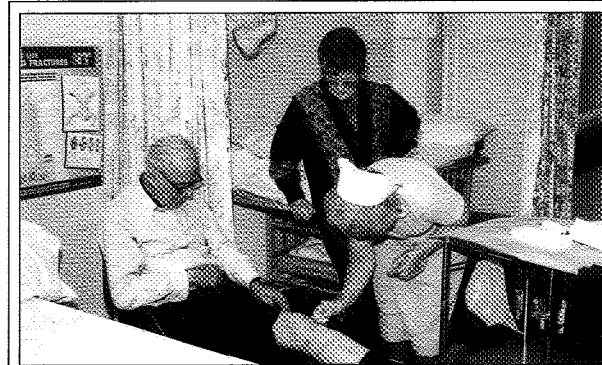
There is a comfortable Day Room with TV, bedside radio, a library and daily newspapers are available on request.

OPERATING THEATRE

The operating theatre has received financial support from the League of Friends and other local organisations over the years. It is able to offer modern up-to-date operating techniques in the following specialities:

- * Gynaecology
- * General Surgery
- * Orthopaedic Surgery
- * Oral Surgery

ACCIDENT/EMERGENCY DEPARTMENT



This department is open 24 hours a day and is nurse led. Patients will be assessed on arrival by a trained nurse. Treatment will be given by the nurse, if appropriate, or medical care will be available usually within 90 minutes.

Emergency assistance will be requested immediately.

OUTPATIENTS DEPARTMENT

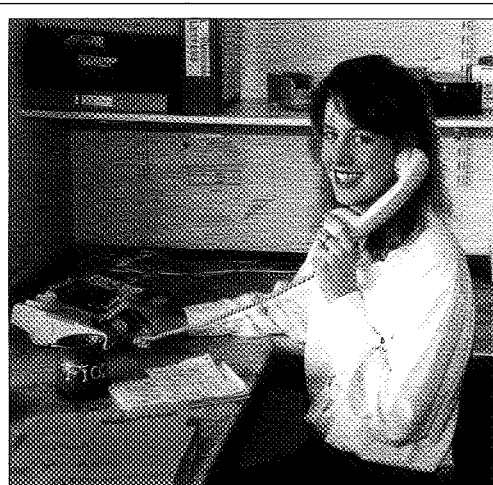
Visiting Consultants offer services in the following specialities:-

- | | |
|--------------------|------------------------------|
| * ENT | * Elderly Services |
| * General Surgery | * Paediatrics |
| * Orthopaedics | * Gynaecology and Ante-natal |
| * Ophthalmology | * Radiotherapy |
| * General Medicine | * Rheumatology |

and non Consultant services include:-

- * Audiology
- * Appliance Clinics
- * Orthoptics
- * ECG
- * Dietetics
- * Venepuncture

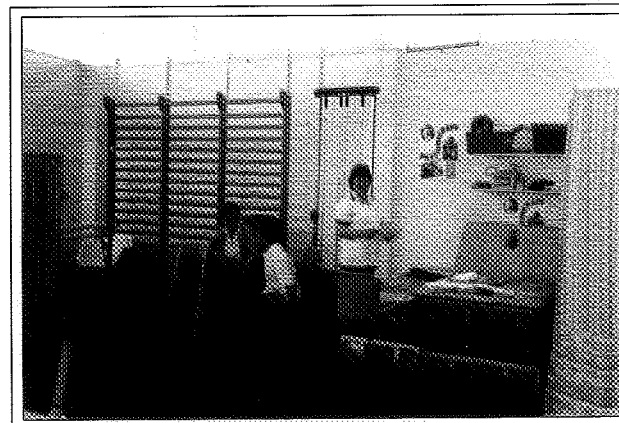
The department is well equipped and volunteers from the League of Friends provide refreshments during Clinics.



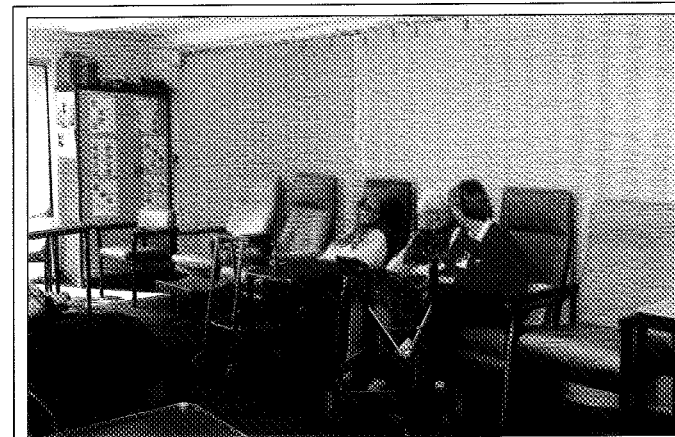
REHABILITATION DEPARTMENT

This department comprises Physiotherapy, Occupational Therapy and a Day Hospital for the elderly. It provides:

- (a) assessment and treatment of functional problems
- (b) rehabilitation by improving physical functions



The department treats inpatients and outpatients. The Day Hospital provides support for the elderly and may prevent admission as an inpatient. It also maintains progress in rehabilitation, following discharge home from hospital.



Transport to and from the Day Hospital is provided by the Day Hospital ambulance, which is driven by Hospital staff. This enables staff to have contact with the relatives and carers at home.